

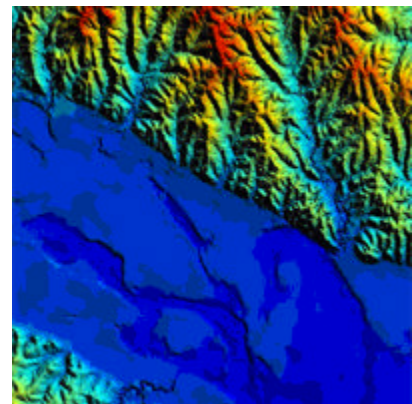
### Information

- *Digital Elevation Models (DEM) available at one quarter the cost of LIDAR imagery. Cost calculated by square mile. Contact GDMIS for more information*
- *1 meter and beyond spatial resolution with minimal vertical and horizontal RMSE depending on source materials.*
- *Drainage-enforced DEM produced with high-resolution hydrographic vector data, results in smooth lake and stream surfaces, that accurately reflect real-world topography*
- *Available through GDMIS's Innovative Partnership (IP) with the USGS National Mapping Division*

**GDMIS** has a Commercial Of The Shelf (COTS) solution for building accurate DEM data. Our DEM is a customizable product, based on consumer needs and will comply with USGS standards, as well as conforming to FEMA topographic requirements at any cell size.

### Technical Approach:

- *GDMIS's process is designed to include various data sources, in order to improve product accuracy. Certified USGS DLGs or TVCs are preferred data input, but also Mylar source data can be used, as only TVH and/or TVCs need to be created for 10 meter DEM products.*
- *Develop realistic representation of the earth's surface using numerous algorithms that best define changes in topography and drainage patterns.*
- *Input vectors and point data include hypsography (contours), hydrography, spot elevation, ridge and supplemental drain data. Additional data layers can also be used to help produce and control model development.*
- *Special attributes are added to the source vector files to control complex topography and its behaviors during model development*
- *To improve efficiently handle datasets, and to standardize the proper sequence of processing steps, production procedures are automated to a great extent preset parameter values, scripted command files and consistent naming schemes for input and output data files.*
- *GDMIS utilizes it's ISO 9001 compliant QA/QC Model for Quality Management system, along with it's Total Quality Management approach to ensure positional and modeling accuracy for each DEM.*



### GDM International Services, Inc.

22456 Sam Fred Road  
Middleburg, VA 20117

Ph: (540)687-6068

Ph: (540)687-8667

Fax: (540)687-8557

[www.gdmcorp.com](http://www.gdmcorp.com)

**GDMIS** is committed to the continued development of quality DEM data. Through in-house research, GDMIS is making the production of large volume DEMs more efficient by utilizing both traditional modeling techniques and new, emerging technologies. Integral to this process is production-related quality control and assurance. The GDMIS quality control process corrects for anomalies that often plague DEMs, such as abrupt breaks in elevation profiles, terracing, false depressions and sinks. These anomalies are corrected with both automatic and interactive procedures.