

Formerly GeoDigital Mapping, GDMIS is a registered small business established in 1991, and incorporated in the State of Virginia. GDMIS currently has offices located in Austin, TX, Front Royal, VA and at the Stennis Space Center in Mississippi. GDMIS's corporate headquarters are located in Middleburg, VA.

GDMIS is a digital mapping and GIS support services contractor with broad experience in quality development of digital applications. We support the mapping and GIS database needs of Federal Government (USGS, USFS, FEMA); State Government (Texas, Mississippi, California); Local Municipalities (Santa Barbara, CA, Cape May, NJ, Front Royal, VA), as well as private companies (Michael Baker, Jr. Company, Greenhome & O'Mara, Dewberry & Davis)



### GDM International Services, Inc.

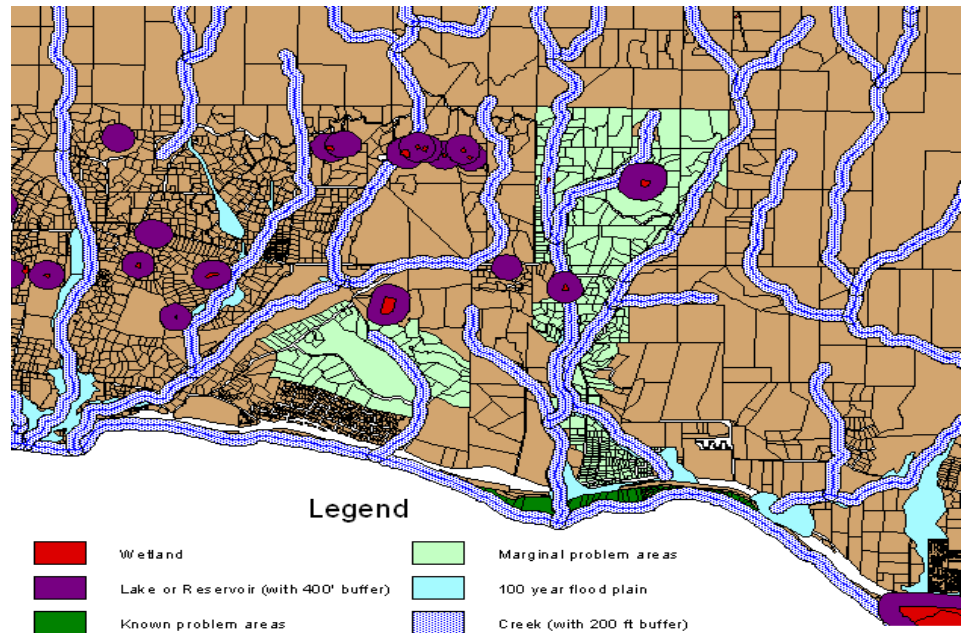
22456 Sam Fred Road  
Middleburg, VA 20117

Ph: (540)687-6068

Ph: (540)687-8667

Fax: (540)687-8557

[www.gdmc Corp.com](http://www.gdmc Corp.com)



In a collaborative effort involving all segments of the community, a working group was formed to establish risk criteria and define areas within the County where on-site disposal systems might be problematic. Areas potentially at risk included:

- *Parcels within 200 feet of the ocean or creek.*
- *Parcels within the 100-year flood plain or a designated wetland.*
- *Parcels within areas previously known to be problematic for on-site disposal system because of poor soils, small lot sizes, or a history of maintenance problems associated with such systems.*

**System Inventory:** GDM worked closely with the 21 sanitary districts serving the County to identify the location of occupied properties not served by sewer systems. Each such property was identified on the Assessors Parcel Map.

**Locating areas at risk:** GDM produced new base maps for the County to locate the presence of surface water features subject to potential contamination. Many diverse data sources were integrated to form a complete picture of the County's surface water resources.

**Performing the risk assessment:** GDM used GIS tools to examine the on-site septic system inventory in relation to surface water resources. Based on rules established by the County's working group, GDM prepared a final report for presentation to the Board of Supervisors.