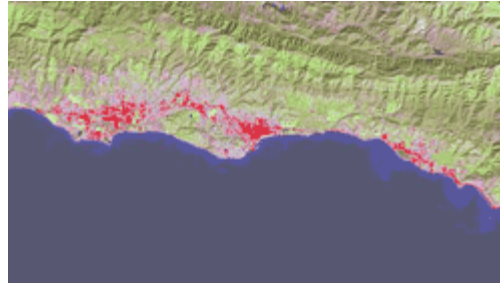


GDMIS is a registered small business established in 1991, and incorporated in the State of Virginia. GDMIS currently has offices located in Austin, TX, Front Royal, VA and at the Stennis Space Center in Mississippi. GDMIS's corporate headquarters are located in Middleburg, VA.

GDMIS is a digital mapping and GIS support services contractor with broad experience in quality development of digital applications. We support the mapping and GIS database needs of Federal Government (USGS, USFS, FEMA); State Government (Texas, Mississippi, California); Local Municipalities (Santa Barbara, CA, Cape May, NJ, Front Royal, VA), as well as private companies (Michael Baker, Jr. Company, Greenhome & O'Mara, Dewberry & Davis)



The importance of impervious surfaces in water quality and storm water pollutant loading is widely recognized by the scientific community. Research over the past several years has consistently revealed a strong correlation between the imperviousness of a drainage basin and the health of associated receiving waters. Stream degradation has been shown to occur when impervious surfaces approach 5 to 20% of the total area of a watershed. By way of perspective, imperviousness in single-family residential areas ranges from 25 percent to nearly 60 percent. Imperviousness in industrial areas is typically 60 - 70% and 80 - 90% in commercial areas and shopping centers.

The effect of impervious surfaces on the volume of storm water runoff can be dramatic. For example, a 1-inch rainstorm over a 1-acre area of natural grassland will typically produce 218 cubic feet of runoff. The same storm over a 1-acre paved parking lot would produce 3,450 cubic feet of runoff, nearly 16 times more than the natural setting. However the problems of stormwater runoff from industrial and commercial are not limited to runoff volume. Urban development creates new pollution sources and brings with it proportionately higher levels of car emissions, car maintenance wastes, litter, pesticides, and hazardous wastes. Parking lots, shopping areas, business and industrial areas often produce hydrocarbon and metal concentrations that are twice those found in the average urban area. Where commercial activities require liquids storage, equipment use or maintenance, other pollutants may also be present in runoff.

GDM International Services, Inc.

**22456 Sam Fred Road
Middleburg, VA 20117**

Ph: (540)687-6068

Ph: (540)687-8667

Fax: (540)687-8557

www.gdmcorp.com